



Optergy Studio Help Guide

Studio v0.15.5



Contents

Contents	2
1. General	3
1.1. Studio Overview	3
1.2. Download Software	4
1.3. Installation	5
1.4. Workspace Setup	6
1.5. BACnet Settings	7
2. Studio App's	8
2.1. Device Manager	9
2.2. Programming Engine	17

1. General

1.1. Studio Overview

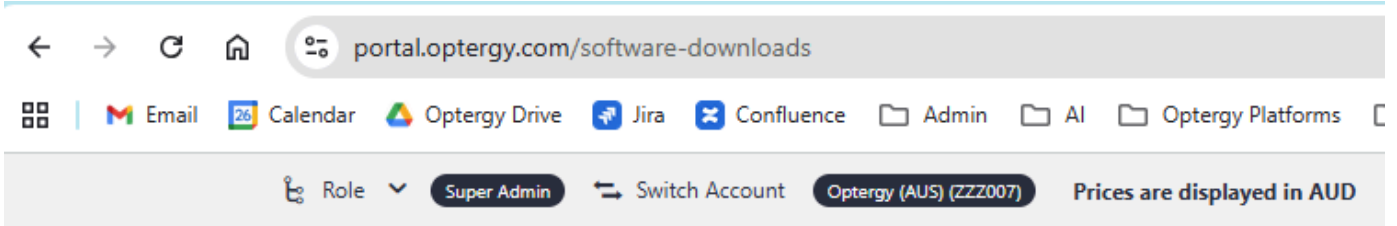
Optergy Studio is a powerful and flexible environment to design, configure, and publish changes to all Optergy devices - without requiring our flagship Enterprise or Proton solutions.

Using the Studio, Optergy solutions can be deployed independently or at scale, in any building or application, easing the burden on project and service engineers.

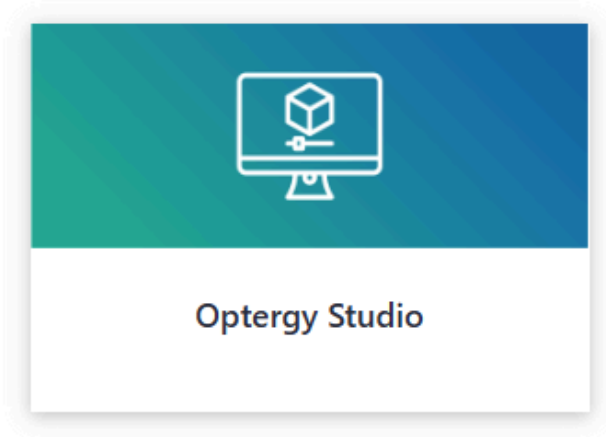
Looking ahead, Optergy Studio will evolve into the central hub for managing, configuring, deploying, and maintaining all Optergy systems and more. In coming versions, AI will be embedded at various points in the tool to efficiently operate and optimize control systems and buildings.

1.2. Download Software

First Download Optergy Studio from your Optergy Customer Portal at <https://portal.optergy.com/software-downloads>

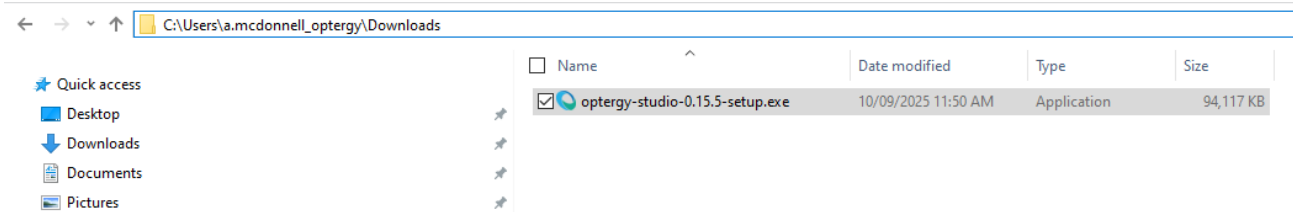


Optergy Tools

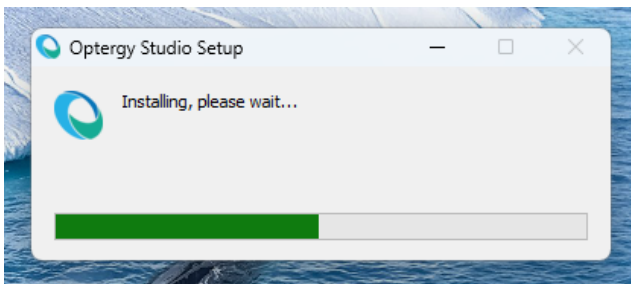


1.3. Installation

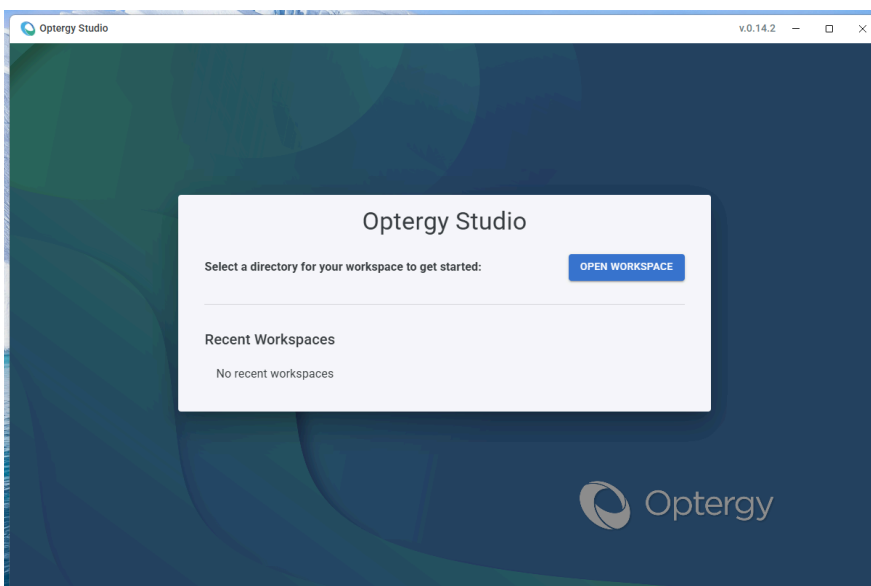
Find and Double Click the .exe to start the installation process.



There are no prompts and the installation process will pop up and install very quickly (<60 seconds).

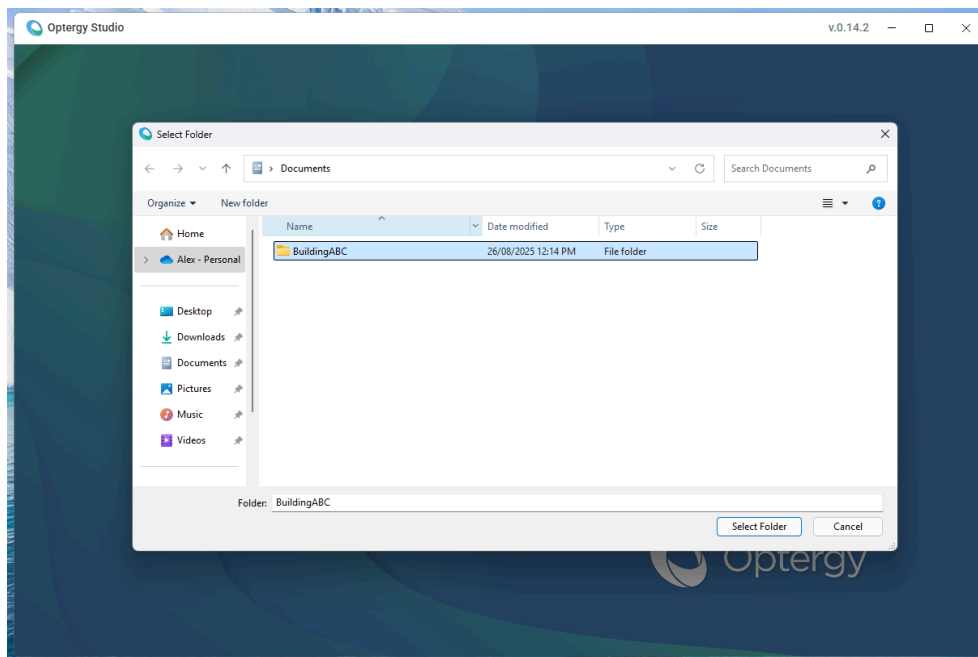


Once your Installation is complete you'll see the following screen.



1.4. Workspace Setup

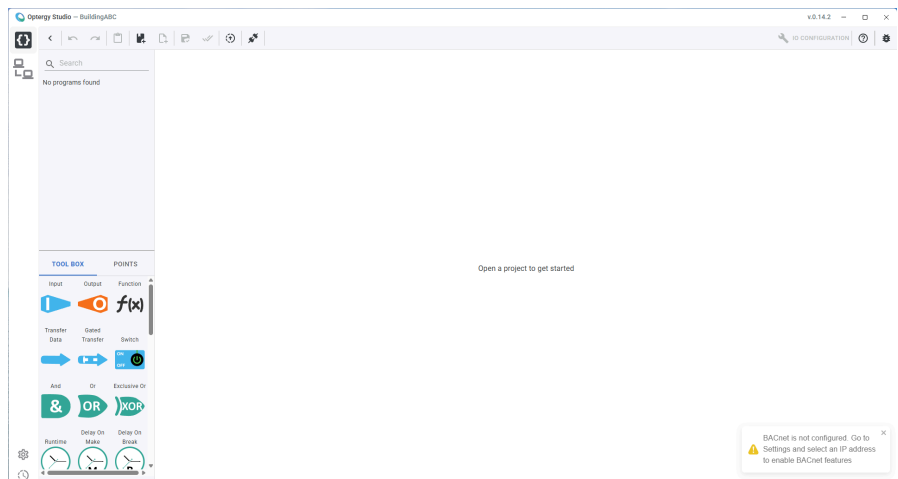
Now that you have successfully installed the program you will need to select 'Open Workspace' to define your first workspace. Defining a workspace is as easy as choosing an empty folder to start with, use the 'New Folder' button if required to create a folder and label it your Project, Building or Solution Name, I've gone with Building ABC.



**If you already have a workspace saved from previous use or another computer simply select that workspace to continue working on that project.*

When you enter a workspace for the first time you'll be asked to Setup your BACnet settings.

Use the Settings Cog in the bottom left hand corner to access your BACnet Settings, which is primarily to select a Network IP Address to operate the BACnet connections on.



1.5. BACnet Settings

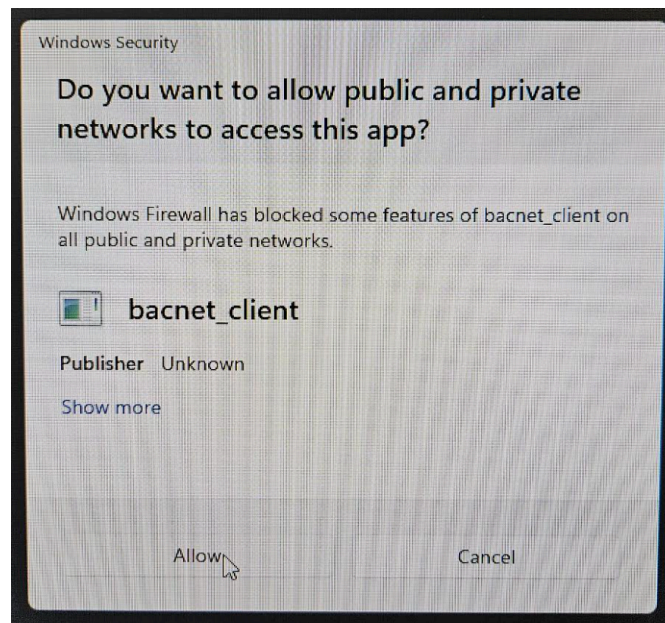
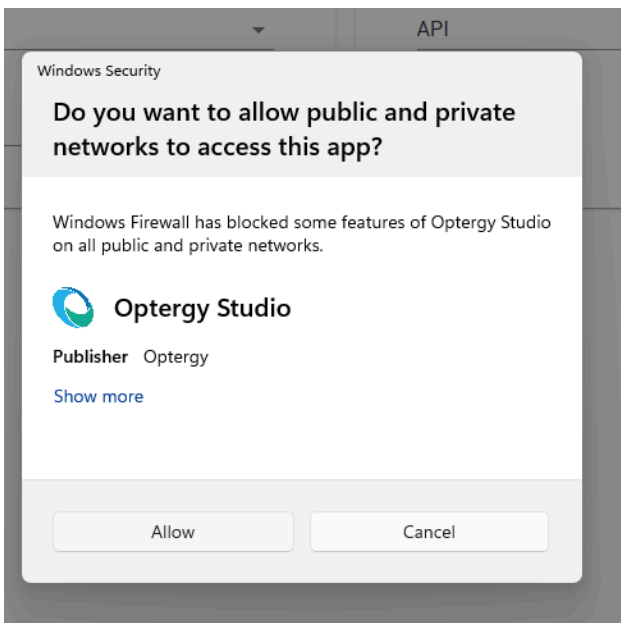
On the Settings Page you'll set your IP Address and modify your BACnet Port if required.

BACnet Configuration

IP Address
192.168.6.147

Port
47808

You will receive two prompts for admin authorization when you do this, a firewall notice for the app to operate on your networks and a bacnet client notice.



Once those are approved you're all setup and ready to begin using the app!

2. Studio App's

Optergy Studio is designed around modular App based systems, the two currently available Apps are:

- Device Manager - scanning and/or adding Optergy devices to the system for bulk configuration, firmware, backup and restore functionalities.
- Programming Engine - The modern replacement of Programming Tool this will allow for the DDC logic creation and publishing to devices, currently only supporting the P442 but will be rolling out to all Optergy devices in the near future.

BACnet vs API Communication

Optergy Studio utilises both BACnet and API communication to communicate with Optergy devices, some functions such as our Programming Engine Live Mode has increased functionality when operating in API mode such as providing exact values/calculations of BACnet or branch points at every interval in the DDC Code (not just the present value of that point).

However devices installed over BACnet/MSTP do not have a direct IP connection and therefore are unable to communicate via our API communication protocol, therefore to ensure they work seamlessly regardless of your onsite implementation the majority of functions operate over both.

Typically the system will attempt to connect via API first, and then fallback to BACnet mode if unable to connect to the device, this can be changed to BACnet first in the settings menu if required.

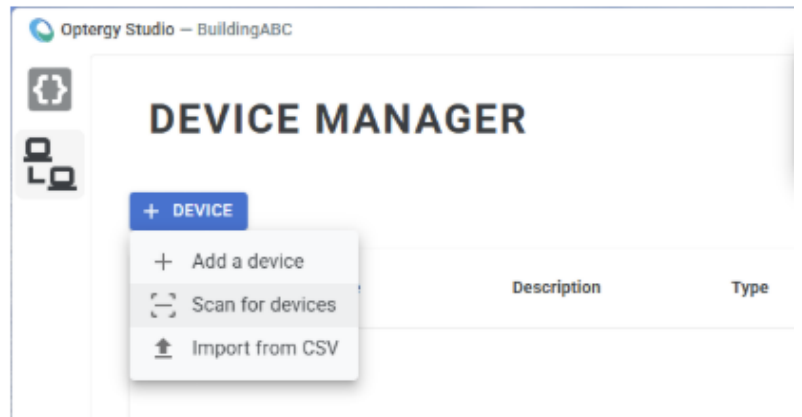
2.1. Device Manager

2.1.1. Adding Devices

The first thing you'll need to do is add some devices.

You have three options:

1. Add a singular device
2. BACnet Scan for devices on the network
3. Import devices from a CSV.



When adding a singular device you must define the BACnet Instance, Type and IP Address.

If you do not specify the username then the device then it will operate on BACnet only without an API connection.

Add Device ×

Instance *
123456

Description
Test P442

Type *
P442

Model Name
P442

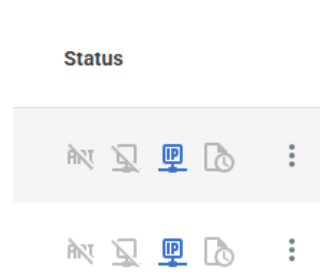
IP Address *
192.168.6.211

Username
admin

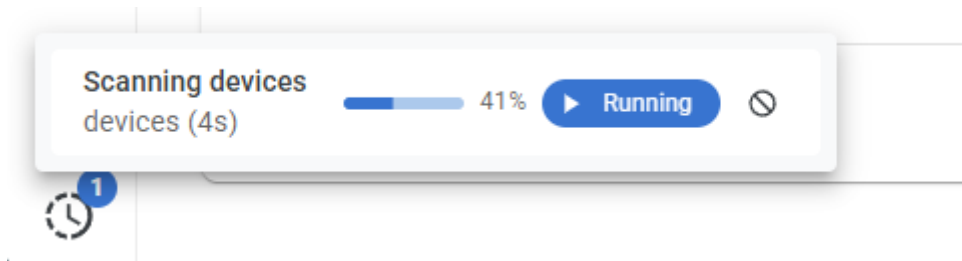
CANCEL ADD DEVICE

You can tell which devices have which connections activated by the symbols on the right hand side of the device table.

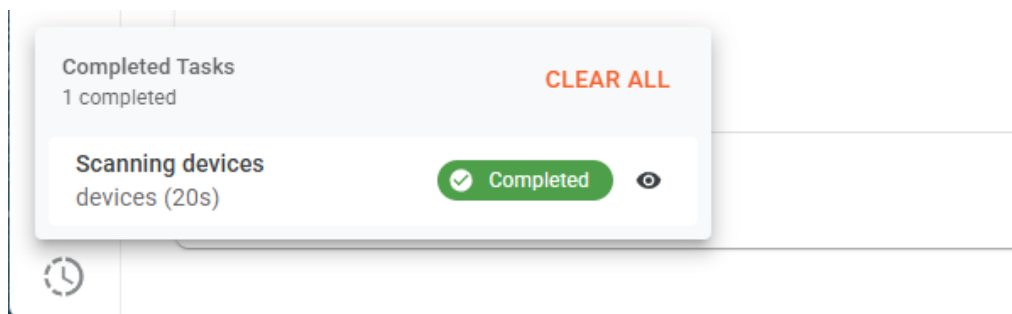
The last symbol is the backup symbol and advises if a successful backup is stored for this device.



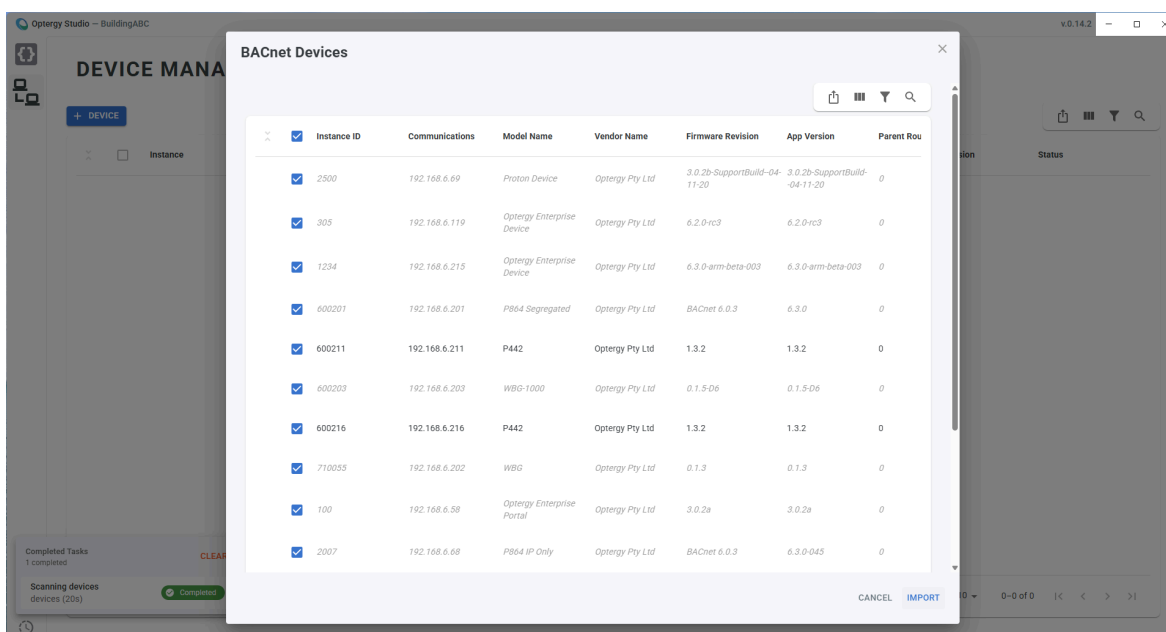
When scanning in devices via BACnet you'll get the following background task appear in the bottom left hand corner of the app.



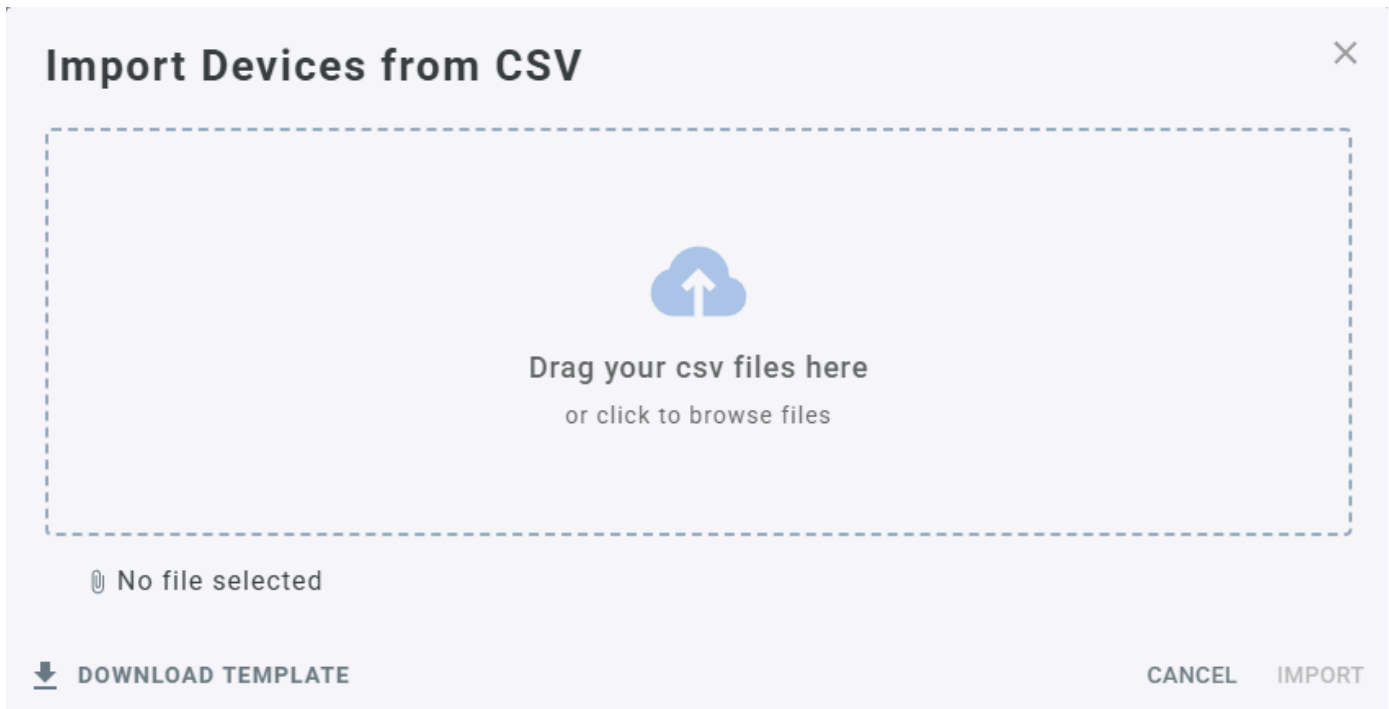
Once it's completed it will update to a green 'complete' sign and you can click on the eye to view more information on the scan, this will then allow you to determine which devices you intend to import.



Select the device you intend to use and then hit 'Import' to add them to the device table.



Lastly where you want to setup your devices pre-installation or need to complete actions in bulk there is the option to import devices from CSV.

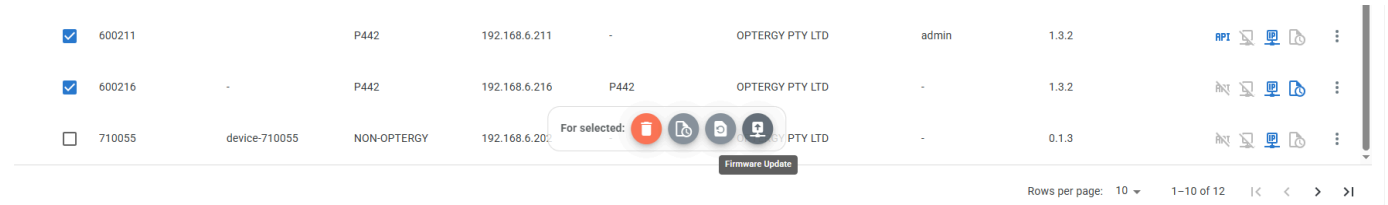


First download the template and open it in your preferred .csv file manager.

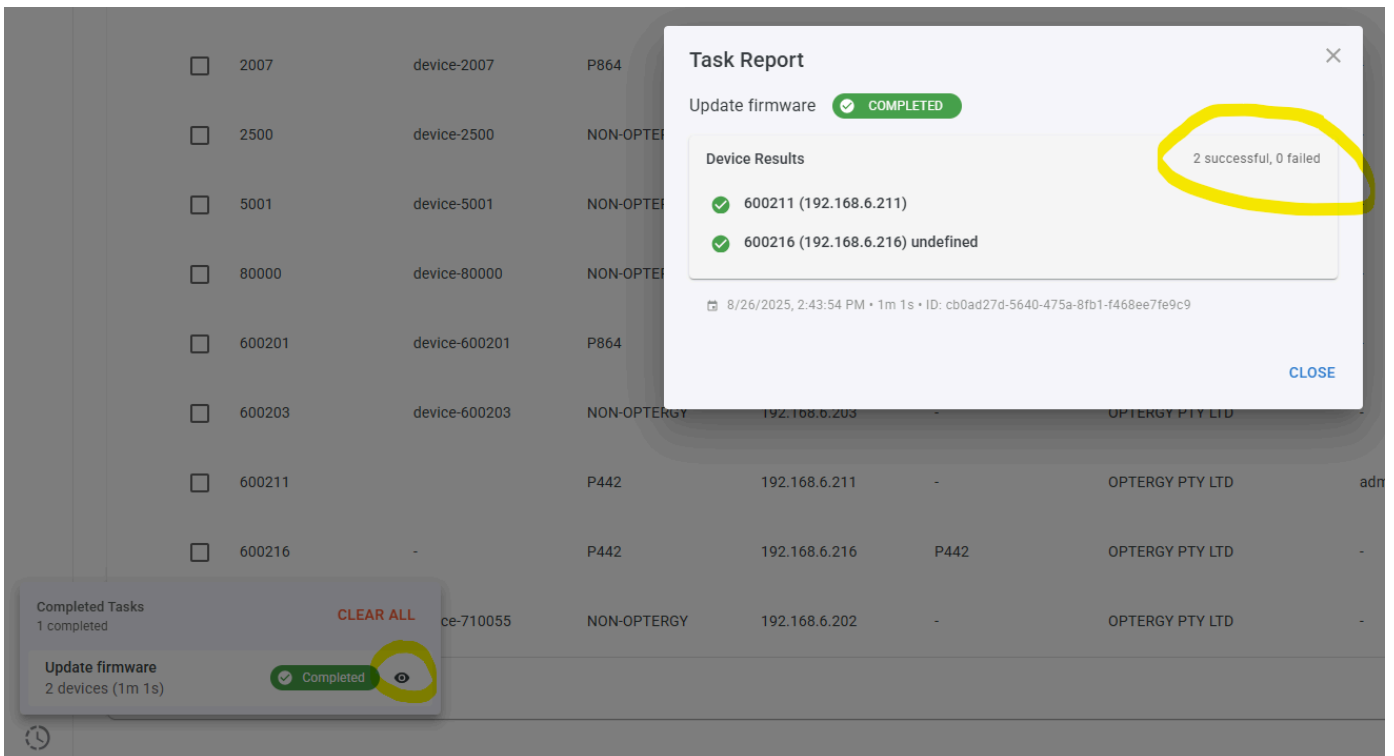
Add all your various devices via spreadsheet and then upload and import into the device manager table.

2.1.2. Bulk Firmware Update

In Order to send bulk firmware through to many devices first select the devices you want to send firmware to and you will notice a bulk actions bar appear, select Firmware Update.

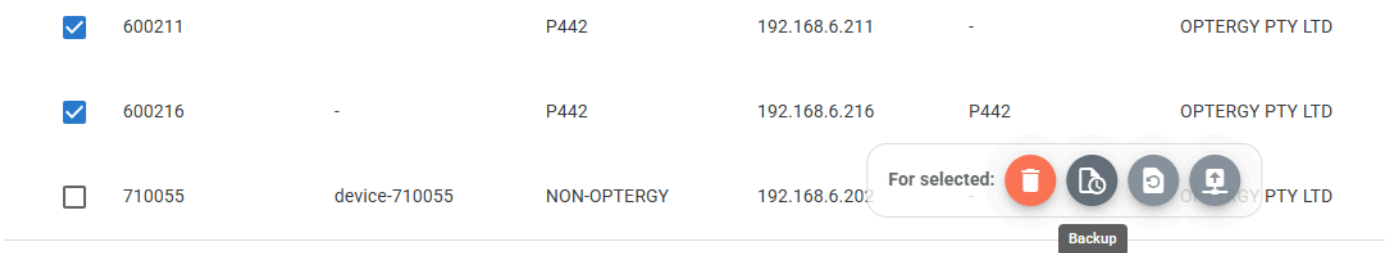


Then select your firmware file and wait for the system to update the devices, once complete you can click on the background task to review successful and failed devices.



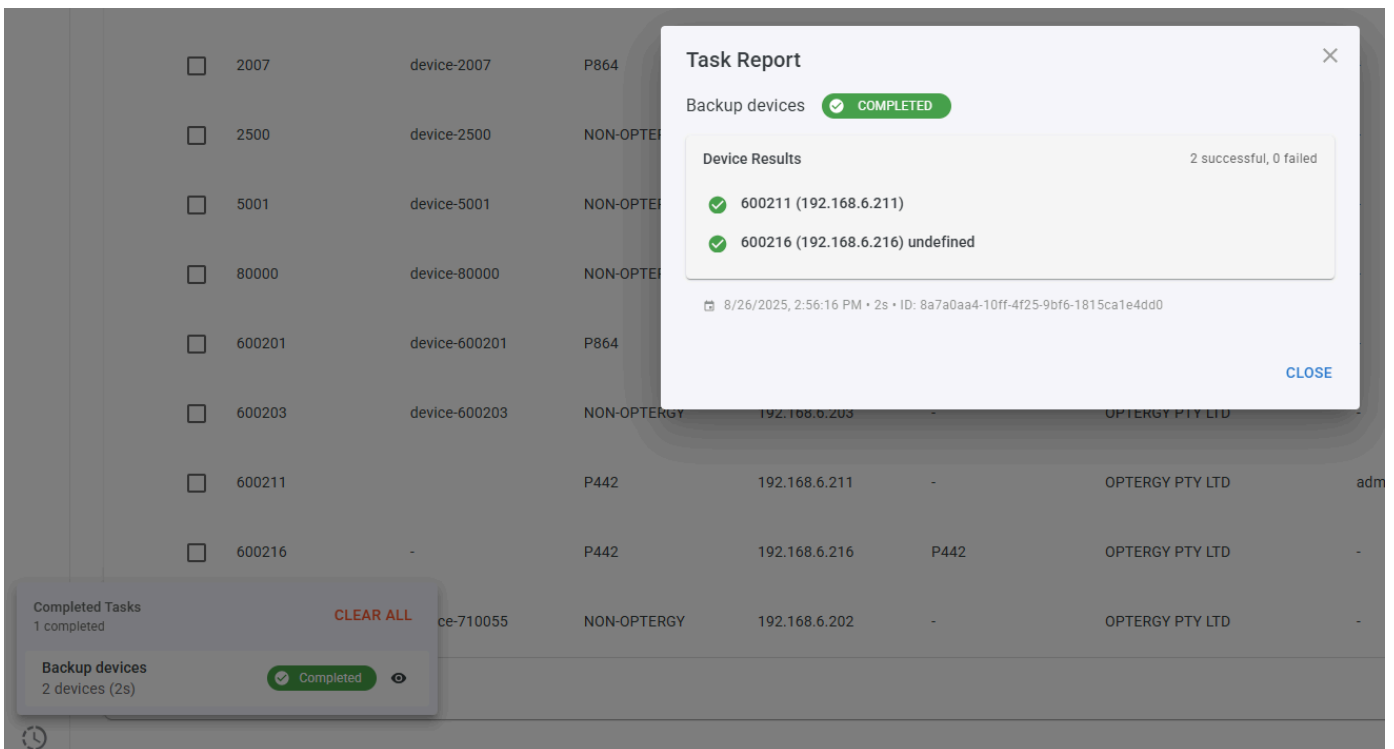
2.1.3. Bulk Backup

In order to store backups of your devices, first select the devices you want to backup and you'll notice a bulk actions bar appear, select Backup and the system will attempt to backup these devices.



If devices are backing up over **BACnet** no further action is required, however if they are backing up over **API** you will be prompted to insert a username and password. When completing this action on many devices the system will only request 1 set of credentials to attempt to login to all devices, in this fashion only devices with the same password can be backed up at the same time over API. You can always switch to BACnet to avoid this problem for sites with unique credentials per device or Backup device one by one.

Similarly to the Firmware Update you will get a Completed notification in the bottom right corner which can be clicked on to review the full report of all successful or unsuccessful backup attempts.



Once successfully backed up these files will be located in the folder location of your workspace \backups

The naming convention used for backups is the same as if you downloaded them directly from the webserver of that device.

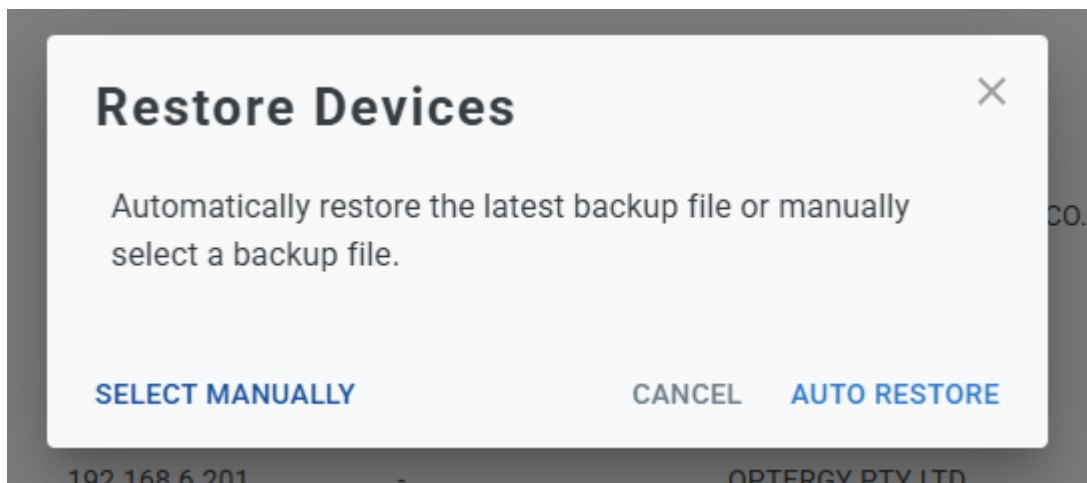
I.E. deviceinstance_model_YYMMDD_TTTTTT.backup

I.E. 600211_p442_20250818_131816.backup

These files can then be gathered for safe storage elsewhere or the entire workspace can be zipped as a full backup of your project.

2.1.4. Bulk Restore

In order to restore backups to your devices, first select the devices you want to backup and you'll notice a bulk actions bar appear, select Restore and the system will provide you Auto and Manual options



For Auto the system will automatically send through Backups based on the latest backup in the system with the correct naming convention that exist within your workspace folder location under \backups. You can manually insert your own backups into this location and the system will automatically identify them if they follow the same naming convention as what was indicated in the Backups section earlier (600211_p442_20250818_131816.backup).

A key item to remember is that the device instance is the primary key of this system, so any compatible backup with 600211 will be associated with BACnet device 600211 in your Device Manager Table.

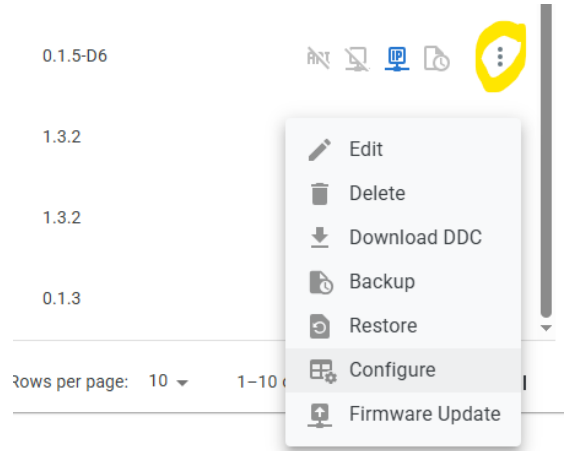
For Manual the system will take and distribute the file you select, typically it's only expected for you to do this one at a time however you can bulk restore in this fashion if required.

Remember that sending a single backup to multiple devices could create duplicate BACnet instances or IP Addresses so be careful if executing this process.

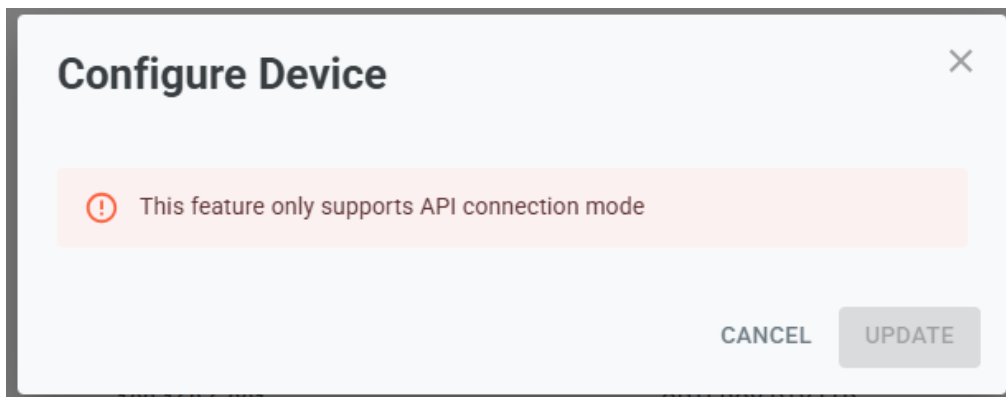
2.1.5. Device Configuration

Currently Device Configuration is not a bulk action and can only be completed on individual devices.

Utilize the three dots menu on the right hand side of each device row to configure the device.



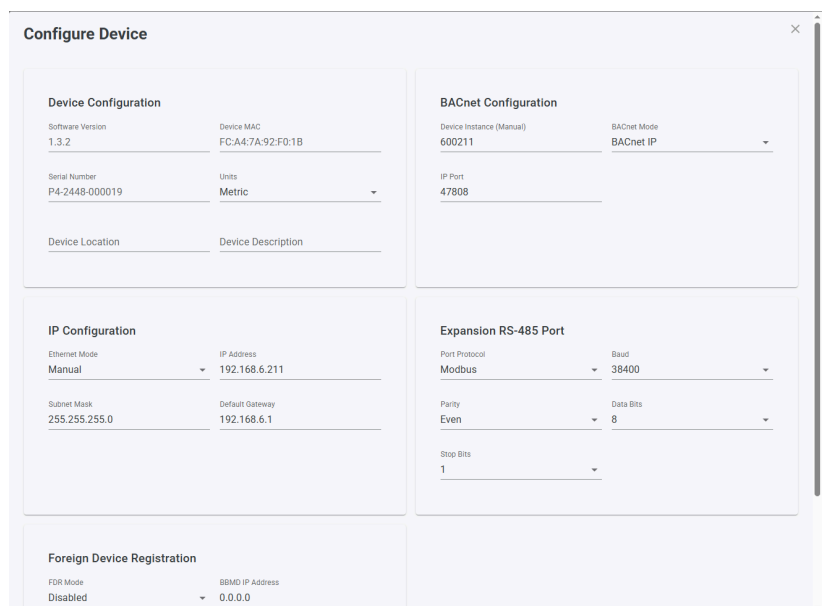
If the device is operating only on BACnet you will receive the following message indicating you cannot utilize this feature.



If you try on a device with API enabled. You will come to a very similar menu to the normal webserver of the new Optergy controllers.

Enter the various configurations and then hit 'Update' button to send the changes.

If you haven't logged into this device yet this session you may receive a credentials prompt to enable logging into the system.

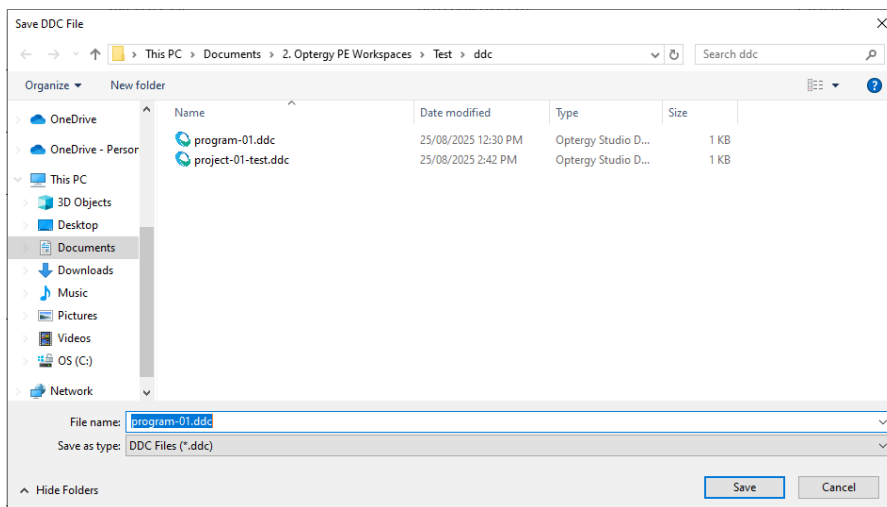
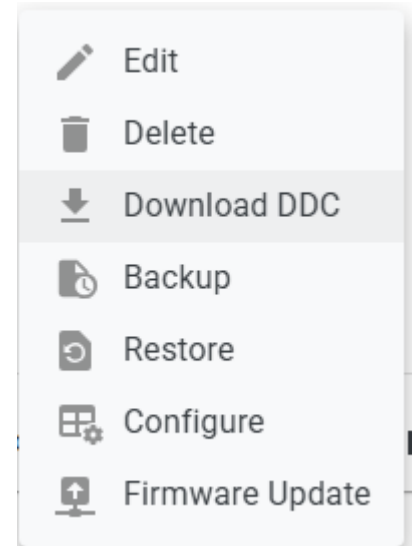


2.1.6. Download DDC

Currently Download DDC is not a bulk action and can only be completed on individual devices.

Utilize the three dots menu on the right hand side of each device row to request the DDC to be downloaded.

A windows file system will appear after the successful download to ask you to save the DDC file and provide you a chance to name the file.



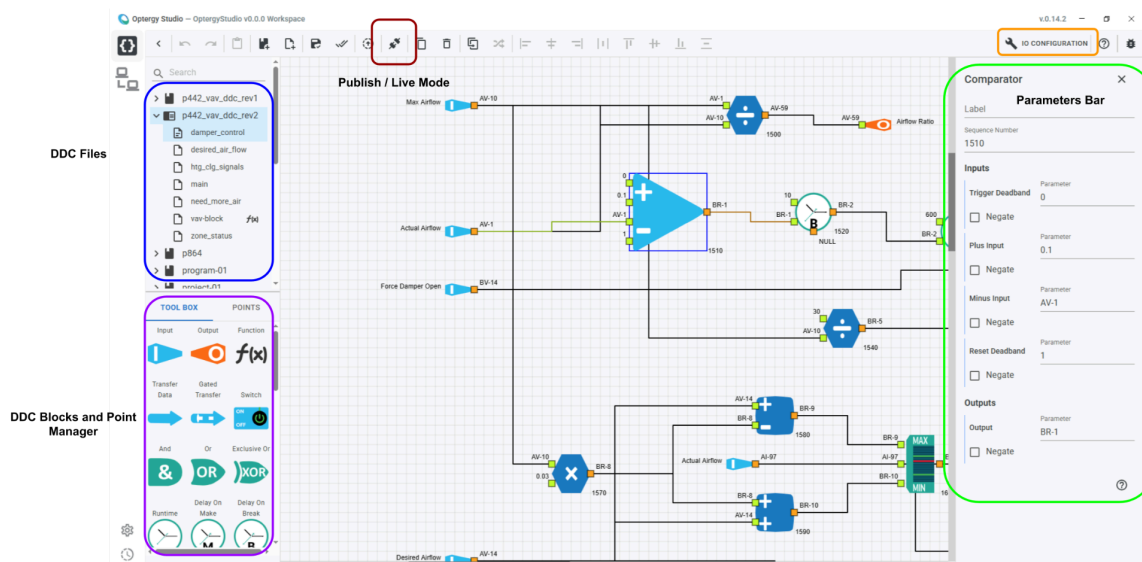
In addition to this note that any .ddc file saved to your workspace \ddc will then appear for use within the Programming Engine and other App's.

2.2. Programming Engine

2.2.1. App Overview

Your Programming Engine allows you to write logic programs for all Optergy devices, the primary features of the App are:

- DDC Files
- Tool Box (all DDC Blocks)
- Points Manager
- Connect to Device (Publishing / Live Mode)
- IO Configuration
- Parameters Bar



Utilize the Question Mark in the top right hand corner to access the help menu for any further information required.

Or check-out our eLearning Portal (elearning.optergy.com) for a full course on how to use Programming Engine or Programming Tool to program your controllers with DDC Logic.

