

# iSMA-B-MG-IP

The iSMA-B-MG-IP device has been designed to simplify the connection of meters installation with BMS.

By applying the most popular interfaces for M-Bus and Modbus meters, the device allows to handle **up to 180 meters of various types simultaneously**.

The M-Bus interface allows to communicate and supply with power **up to 60 M-Bus meters**. The maximum current cannot exceed 130 mA.

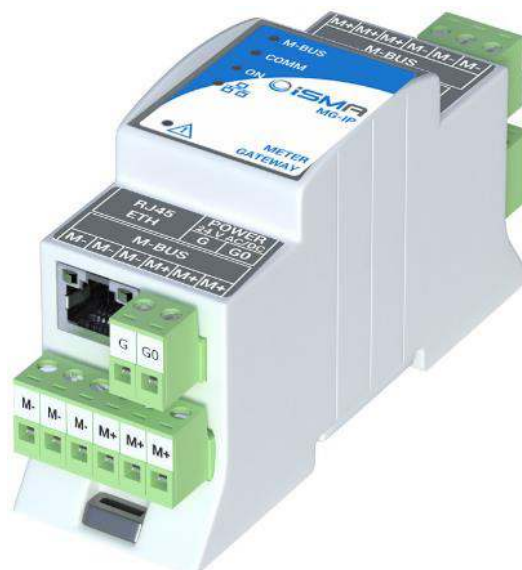
The RS485 interface allows to connect **up to 128 Modbus devices**. The device address and baud rate for Modbus are set by using DIP switches.

The built-in TCP/IP interface provides the ability to use the existing LAN infrastructure, also allows to build a scattered meters monitoring systems.

iSMA-B-MG-IP device configuration is possible from the built-in web services level and by using free tool such as iSMA Configurator.

## Key Features

- M-Bus TCP/IP and UDP/IP to M-Bus gateway
- Modbus TCP/IP to Modbus RTU/ASCII gateway
- Up to 180 meters (devices) of various types
- Two independent gateways operating simultaneously in one device
- Built-in power supply for up to 60 M-Bus meters (devices)
- Direct connection for up to 6 M-bus branches
- Built-in Mini USB port for configuration and firmware updates



# iSMA-B-MG-IP

## Specification

### Connectors

- 12x screw connector max 2,5 mm<sup>2</sup> (18 – 12 AWG).  
Direct connection for up to 6 M-Bus branches
- 1x RS485
- 1x RJ45

### Supported devices

- Up to 60 M-Bus meters
- Up to 128 Modbus Slave devices

### Galvanic isolation

- 3 kV AC/DC for all interfaces and power supply

### Communication

- Interface M-Bus Master according to EN 13757-2
- Interface RS485 half duplex
- 1x Fast Ethernet
- Protocols: M-Bus and Modbus
- M-Bus baud rate: 300 to 38400 bps
- Modbus baud rate: 2400 to 115200 bps

### Platform

- ARM Cortex-M3

### Power supply

- 24 V AC/DC

### Housing

- Dimension: 37x110x62 mm (1.457x4.331 x 2.441 in)
- Construction: plastic, self-extinguishing (PC/ABS)
- DIN rail mounting DIN (DIN EN 50022 norm)
- Cooling: internal air circulation

### Environment

- Operating temperature: -10°C to 50°C (14°F to 122°F)
- Storage temperature: -40°C to 85°C (-40°F to 185°F)
- Relative humidity: 5% to 95%, no condensation
- Ingress Protection Rating: IP40—for indoor installation

