

Parameters

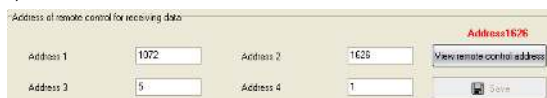
Electrical Parameters	
Power unit	Self-generating Electricity, not need extra power and battery
Communication	RF
Wireless Central Frequency	433.92MHz
Communication Distance	Outdoor: 80m; Indoor: 30m
Electronic Life Time of Relay	>1000000
Environmental Conditions	
Working Temperature	0°C~45°C
Working Elative Humidity	40%~98%
Storage Temperature	-20°C~+60°C
Storage Relative Humidity	10%~93%
Approved	
CE	
RoHS	
Product information	
Dimensions	83×83×15.4 (mm)
Weight	98.5g
Housing Material	PC
Installation	Sticker or screw fix installation
Protection Degree	IP20

Configuration Steps

1. Address matching:

Enter the "Base information" page of RF receiver in the HDL Buspro software; make panel close to the RF receiver, and press any one button of this panel; Click "View remote control address", the address of this panel will be displayed (e.g., 1626);

And put this panel address into the address bar (such as address, 2); And click "Save".



2. Target setting:

Enter the "Key assignation" page of RF receiver, need to select the address No. (here is address 2).



In the key information, set the three control objects for this panel, key no. 1 is for the left button, key no. 2 is for right button, key no. 3 is for left & right buttons.

Key no.	Remark	Mode
1	Left button	Single on/off
2	Right button	Single on/off
3	Left & right buttons	Single on/off

Overview



HDL-MP2N-RF.18 2 button RF switch panel, no need wiring and no need battery; Just need to work with RF receiver (HDL-MRF16.4C); By sending button number to the RF receiver to control HDL - Bus system, such as lighting curtain etc.

Functions

- Use self-generating electricity technology, Collect switch instantaneous energy used to send radio signals, without using the battery
- Address matching with RF receiver, Achieve to control the HDL Buspro system and devices
- 2 buttons 3 switch control function can be realized, they are: left button, right button, left & right buttons

Important Notes

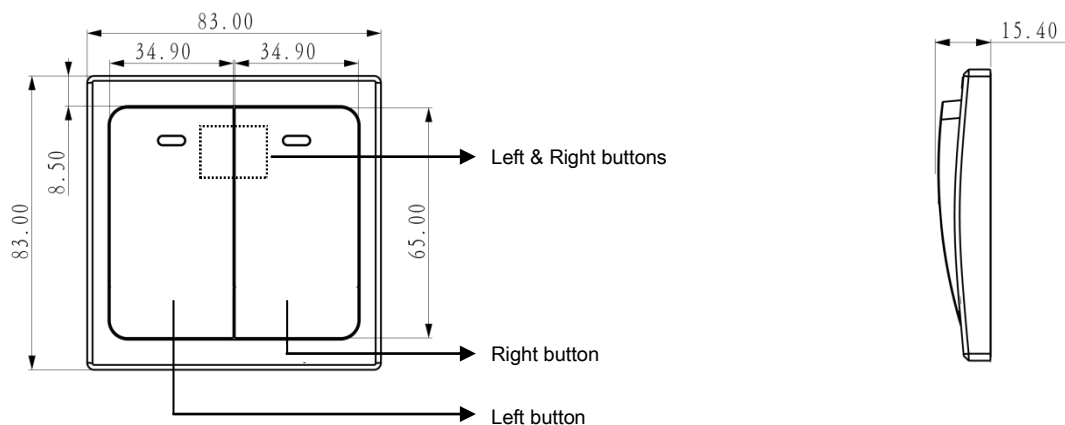
- It must work with RF receiver(HDL-MRF16.4C).
- The matching address with RF receiver must be same as the target setting address.
- Please do not install this panel on the metal, may reduce transmitting distance.
- The outdoor transmitting distance is about 80m; the indoor transmitting distance is about 30m, can through-wall control.
- During the installation process, the two buttons maybe transposition; when debugging target, need to pay attention that the left button is controlling the key1' target, or the key2's target.

Configuration Steps

3. Target control:

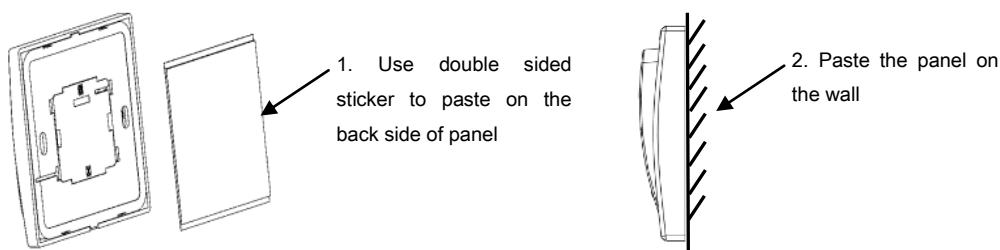
After setting the targets, press the left button of the panel, can control the key1's target; Press right button of the panel, can control the key2's target; Press left and right buttons, can control the key3's target.

Dimensions and Wiring

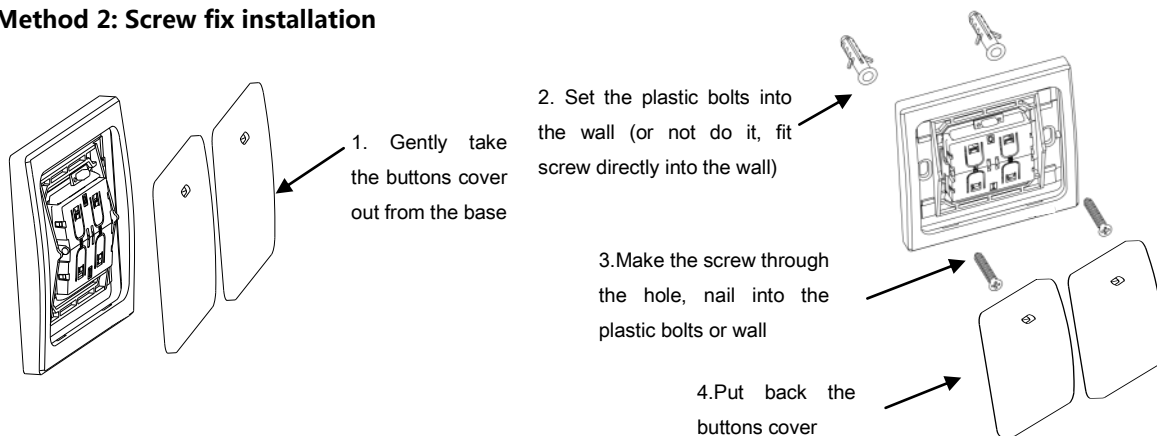


Installation Steps

Method 1: Paste installation



Method 2: Screw fix installation



Notice: Please do not install this panel on the metal, may reduce transmitting distance.

Safety precaution



- Screw down strength is less than 0.4Nm
- Button strength is about 7 N
- Assure a good ventilation circumstances
- Non-rain, non-contact with other liquids or corrosive gases

Package content

- HDL - MP2N-RF.18 *1 / Datasheet*1

