

M/P01.2 KNX iFlex Series 1 Button Smart Panel EU(US)
 M/P02.2 KNX iFlex Series 2 Buttons Smart Panel EU(US)
 M/P03.2 KNX iFlex Series 3 Buttons Smart Panel EU(US)
 M/P04.2 KNX iFlex Series 4 Buttons Smart Panel EU(US)
 Hardware Version: A

KNX®
Datasheet
 Issued: July 21, 2019
 Edition: V1.0.0



Figure 1. KNX iFlex Series 1 Button Smart Panel EU Figure 2. KNX iFlex Series 2 Buttons Smart Panel EU



Figure 3. KNX iFlex Series 3 Buttons Smart Panel EU Figure 4. KNX iFlex Series 4 Buttons Smart Panel EU



Figure 5. KNX iFlex Series 1 Button Smart Panel US Figure 6. KNX iFlex Series 2 Buttons Smart Panel US



Figure 7. KNX iFlex Series 3 Buttons Smart Panel US Figure 8. KNX iFlex Series 4 Buttons Smart Panel US

Customizable Label

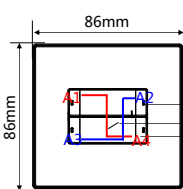


Figure 9

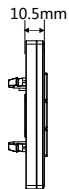


Figure 10

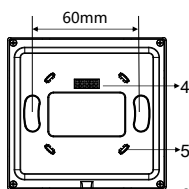


Figure 11

M/P02.2 (EU)

Figure 9 - 11. Dimensions

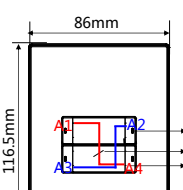


Figure 12



Figure 13

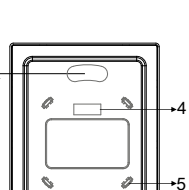


Figure 14

M/P02.2 (US)

Figure 12 - 14. Dimensions

Overview

KNX iFlex Series 1(2/3/4) Button (s) Smart Panel EU (US) (See Figure 1-8) is a multi-function control panel with mechanical control buttons, and multiple button control types are available. Button labels, plate material and color are customizable.

Functions

- Button work modes: Left & right button combined mode or independent button mode.
- LED indicator is available for each button.
- Supports multiple control modes: Switch Control, Dimming, Shutter Control, Flexible Control, Scene Control, Sequence Control, Percentage Control, Threshold Control, Combination Control, String (14bytes) Controller, Button Lock, Button Trigger.
- Push the top left corner and the bottom right corner button (Button A1 and A4 for M/P02.2, Button A1 and A6 for M/P03.2, Button A1 and A8 for M/P04.2) simultaneously for 2 seconds, then the panel will enter programming mode.
- Users can customize button label.
- Selectable plate and frame.

Important Notes

- The panel should be installed in wall box.
- The panel must work in conjunction with the power interface (M/PCI.1 in conjunction with EU panel, M/PCI.3 in conjunction with US panel).
- The device is compliant with KNX standard and the parameters are set by the Engineering Tool Software (ETS).

Product Information

Dimensions - See Figure 9 - 14

- 1. Button indicator:** It indicates the status of the controlled target.
 - 2. Button label:** Users can print and replace the button labels.
 - 3. Push Button:** On/ Off, dimming
 - 4. Communication interface:** Connects the panel to the power interface.
 - 5. Fastener:** Connects the panel to the power interface.
 - 6. Split gap:** Insert a slotted screwdriver to the split gap, then separate the panel and power module.
- Programming:** Push the top left corner and the bottom right corner button (Button A1 and A4 for M/P02.2, Button A1 and A6 for M/P03.2, Button A1 and A8 for M/P04.2) simultaneously for 2 seconds, then the panel will enter programming mode.
- Button locking and unlocking:** Push the top right corner and the bottom left corner button (Button A2 and A3 for M/P02.2, Button A2 and A5 for M/P03.2, Button A2 and A7 for M/P04.2) simultaneously for 2 seconds, then the buttons will be locked or unlocked.

Product installation and disassembly

(Take M/P03.2 (EU) as an example)

Installation - See Figure 15 - 17

- Step 1. Install the wall box in the wall.
- Step 2. Fix the power interface onto the wall box with screws.
- Step 3. Hold the edge of panel, and insert the panel in the slots of power interface vertically.

Disassembly - See Figure 18

- Step 1. Insert the panel gap with a slotted screwdriver.
- Step 2. Hold the panel, pry up the panel gently and take down the panel.

Safety Precautions

- The installation and commissioning of the device must be carried out by HDL or the organization designated by HDL. For planning and construction of electric installations, the relevant guidelines, regulations and standards of the respective country are to be considered.
- The device should be wall box mounted. HDL does not take responsibility for all the consequences caused by installation and wire connection that are not in accordance with this document.
- Please do not privately disassemble the device or change components, otherwise it may cause mechanical failure, electric shock, fire or body injury.
- Please resort to our customer service department or designated agencies for maintenance service. The warranty is not applicable for the product fault caused by private disassembly.

Package Contents

Panel*1 / Datasheet*1 / Button label *2n (n is button number)

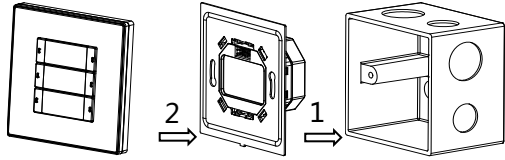


Figure 17. KNX iFlex Series Panel Figure 16. Power interface Figure 15. Wall box
Figure 15 - 17. Installation

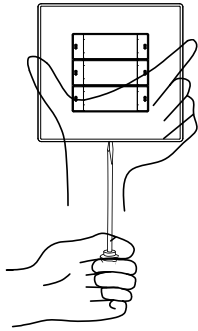


Figure 18. Disassembly

Technical Data

Basic Parameters

Working voltage	21~30V DC
Working current	15mA/30V DC
Communication	KNX
Cable diameter of KNX terminal	0.6-0.8mm

External Environment

Working temperature	-5°C~45°C
Working relative humidity	≤90%
Storage temperature	-20°C~60°C
Storage relative humidity	≤93%

Specifications

Dimensions	EU: 86×86×10.5(mm) US: 116.5×86×10.5(mm)
Net weight	EU: 109g US: 131g
Housing material	Glass, PC
Installation	Wall box (See Figure 15 -17)
Protection rating (Compliant with EN 60529)	IP20

Name and Content of Hazardous Substances in Products

Components	Hazardous substances					
	Lead (Pb)	Mercury (Hg)	Cadmium (Cd)	Chromium VI (Cr (VI))	Poly-brominated biphenyls (PBB)	Poly-brominated diphenyl ethers (PBDE)
Plastic	o	o	o	o	o	o
Hardware	o	o	o	o	-	-
Screw	o	o	o	×	-	-
Solder	×	o	o	o	-	-
PCB	×	o	o	o	o	o
IC	o	o	o	o	×	×
Glass	o	o	o	o	o	o

The symbol “-” indicates that the hazardous substance is not contained.

The symbol “o” indicates that the content of the hazardous substances in all the homogeneous materials of the component is below the limit requirement specified in the Standard IEC62321-2015.

The symbol “×” indicates that the content of the hazardous substance in at least one of the homogeneous materials of the part exceeds the limit requirement specified in the Standard IEC62321-2015.

KNX Cable Guide

	KNX	KNX Cable
	+	Red
	-	Black

技术支持

服务热线：020-85820195

工作时间：9:00-12:00, 13:00-18:00 (周一至周五)

邮箱：kfb@hdlchina.com.cn

网址：http://www.hdlchina.com

© 2019 广州河东科技有限公司 保留一切权利。
本说明书可能在未提前通知的情况下更改或更新。