

HDL-MP4C.48
Granite/Metal Push Button Panel EU

HDL-MP6C.46
Granite/Metal Push Button Panel US

buspro

Datasheet
Issued: June 26, 2019
File Edition: V1.0.0

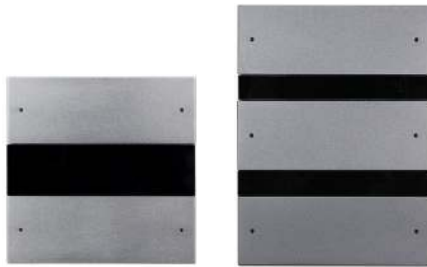


Figure 1. HDL-MP4C.48 Figure 2. HDL-MP6C.46

Customizable label

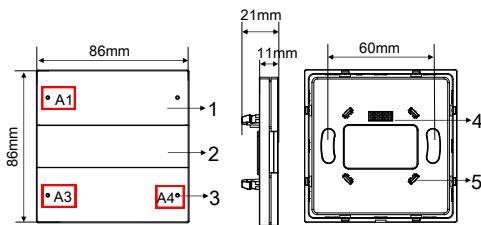


Figure 3 Figure 4 Figure 5

HDL-MP4C.48

Figure 3 - 5. Dimensions

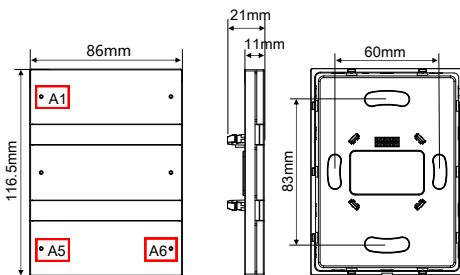


Figure 6 Figure 7 Figure 8

HDL-MP6C.46

Figure 6 - 8. Dimensions

Overview

Granite (See Figure 1-2) is a multi-function panel, which supports a variety of key control types. It is embedded with RGB light for each button. Any color and brightness of label backlight and button indicator can be set in HDL Buspro Setup Tool 2.

Functions

- Key Mode: Single on/off, Single on, Single off, Combination on, Combination off, Combination on/off, Double click/ Single on and off, Double click/ Combination on and off, Momentary, Short/long press, Short press/long press
- Key Control Type: Scene, Sequence, Timer, Universal Switch, Single Channel Control, Broadcast Scene, Broadcast Channel, Curtain Control, GPRS Control, Panel Control, Security Module, Music Play, Universal Control, DALI Area Dimming, RGB Adjustment, Infrared Control, etc.
- With built-in temperature probe, the panel can automatically obtain the temperature information.
- Customizable color and brightness of the label backlight and button indicator
- Test bus voltage function
- Combination button mutual exclusion function is available
- Supports HDL Buspro online upgrades

Important Notes

- The panel must be wall box mounted.
- It must work in conjunction with the power interface.
- It is recommended to adopt Buspro connection - Series connection (hand-in-hand).

Product Information

Dimensions - See Figure 3 - 8

- 1. Control button:** It is used to control the status of the targets
 - 2. Label backlight:** It is for label backlight. Normal and sleep mode can be set. The color and brightness of the label backlight can be defined by user.
 - 3. Button indicator:** It is used to indicate the status of the targets. The color and brightness of the indicator can be customized by user.
 - 4. Communication interface:** It connects to panel power interface.
 - 5. Fastener:** It connects to panel power interface.
- Address modification:** Keep pressing any button for 15 seconds, all the backlights will flash, the address of this device can be modified via HDL Buspro Setup Tool 2: Submenu "address management→ address modify". Then press any button to exit.

Panel locking and unlocking: Press the top left corner and the lower right corner button (A1 and A4 for HDL-MP4C.48, A1 and A6 for HDL-MP6C.46) simultaneously for 2 seconds, the panel will be locked or unlocked.

Manual upgrade: When the panel is being powered on, pressing the 2 buttons at the bottom (A3 and A4 for HDL-MP4C.48, A5 and A6 for HDL-MP6C.46) simultaneously enables manual update.

Product installation and disassembly

(Take HDL-MP4C.48 as an example)

Installation - See Figure 9 - 11

- Step 1. Fix the power interface into the wall box with screws.
- Step 2. Hold the edge of panel, then insert the panel into the power interface module vertically.

Disassembly - See Figure 12

- Step 1. Insert the panel gap with a slotted screwdriver.
- Step 2. Pry up the panel gently and hold the edge panel. Then the panel can be taken off.

Glass replacement - See Figure 13 - 16 (Take HDL-MP6C.46 as an example)

- Step 1. Insert the split gap on the left and right of the metal covers and the right split gap of the glasses with a slotted screwdriver, and pry gently, then remove the metal covers and glasses.
- Step 2. Align the new glasses and the original metal covers with the panel buckle and gently press to complete the glass replacement.

Safety Precautions

- The installation and commissioning of the device must be carried out by HDL or the organization designated by HDL. For planning and construction of electric installations, the relevant guidelines, regulations and standards of the respective country are to be considered.
- The device should be wall box mounted. HDL takes no responsibility for all consequences caused by installation and wire connection which are not in accordance with this document.
- Please do not privately disassemble the device or change components, otherwise it may cause mechanical failure, electric shock, fire or body injury.
- Please contact our after-sales departments or our designated service agencies for your maintenance service. Product failures caused by private disassembly are not subject to this warranty.

Package Contents

HDL-MP4C.48 or HDL-MP6C.46*1 / Datasheet*1

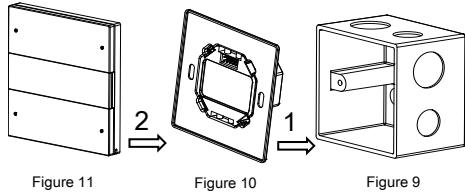


Figure 9 – 11. Installation

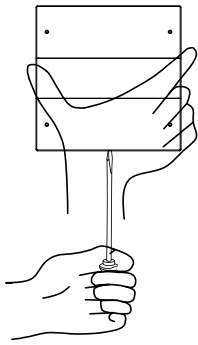


Figure 12. Disassembly

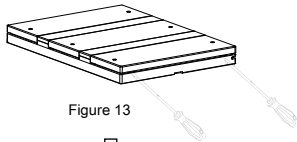


Figure 13

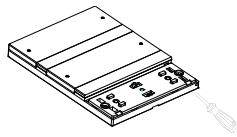


Figure 14

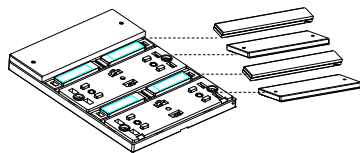


Figure 15

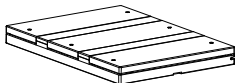


Figure 16

Figure 13 – 16. Glass replacement

Technical Data

Basic Parameters

Working voltage	12~30V DC
Working current	13mA/24V DC
Communication	HDL Buspro
Cable diameter of Buspro terminal	0.6-0.8mm

External Environment

Working temperature	-5°C~45°C
Working relative humidity	≤90%
Storage temperature	-20°C~60°C
Storage relative humidity	≤93%

Specifications

Dimensions	MP4C.48:	86×86×11(mm)
	MP6C.46:	86×116.5×11(mm)
Net weight	MP4C.48:	109g
	MP6C.46:	138g
Housing material	Glass, PC, ABS, Aluminum	
Installation	Wall box (See Figure 9 - 11)	
Protection rating (Compliant with EN 60529)	IP20	

Name and Content of Hazardous Substances in Products

Components	Hazardous substances					
	Lead (Pb)	Mercury (Hg)	Cadmium (Cd)	Chromium VI (Cr (VI))	Poly-brominated biphenyls (PBB)	Poly-brominated diphenyl ethers (PBDE)
Plastic	o	o	o	o	o	o
Hardware	o	o	o	o	-	-
Screw	o	o	o	x	-	-
Solder	x	o	o	o	-	-
PCB	x	o	o	o	o	o
IC	o	o	o	o	x	x
Glass	o	o	o	o	o	o

The symbol "-" indicates that the hazardous substance is not contained.

The symbol "o" indicates that the content of the hazardous substances in all the homogeneous materials of the component is below the limit requirement specified in the Standard IEC62321-2015.

The symbol "x" indicates that the content of the hazardous substance in at least one of the homogeneous materials of the part exceeds the limit requirement specified in the Standard IEC62321-2015.

HDL Buspro Cable Guide

HDL Buspro	HDL Buspro Cable
DATA+	Yellow
DATA-	White
COM	Black
24V DC	Red

Technical support

E-mail: hdtickets@hdlautomation.com
 Website: <https://www.hdlautomation.com>

©Copyright by HDL Automation Co., Ltd. All rights reserved.
 Specifications subject to change without notice.